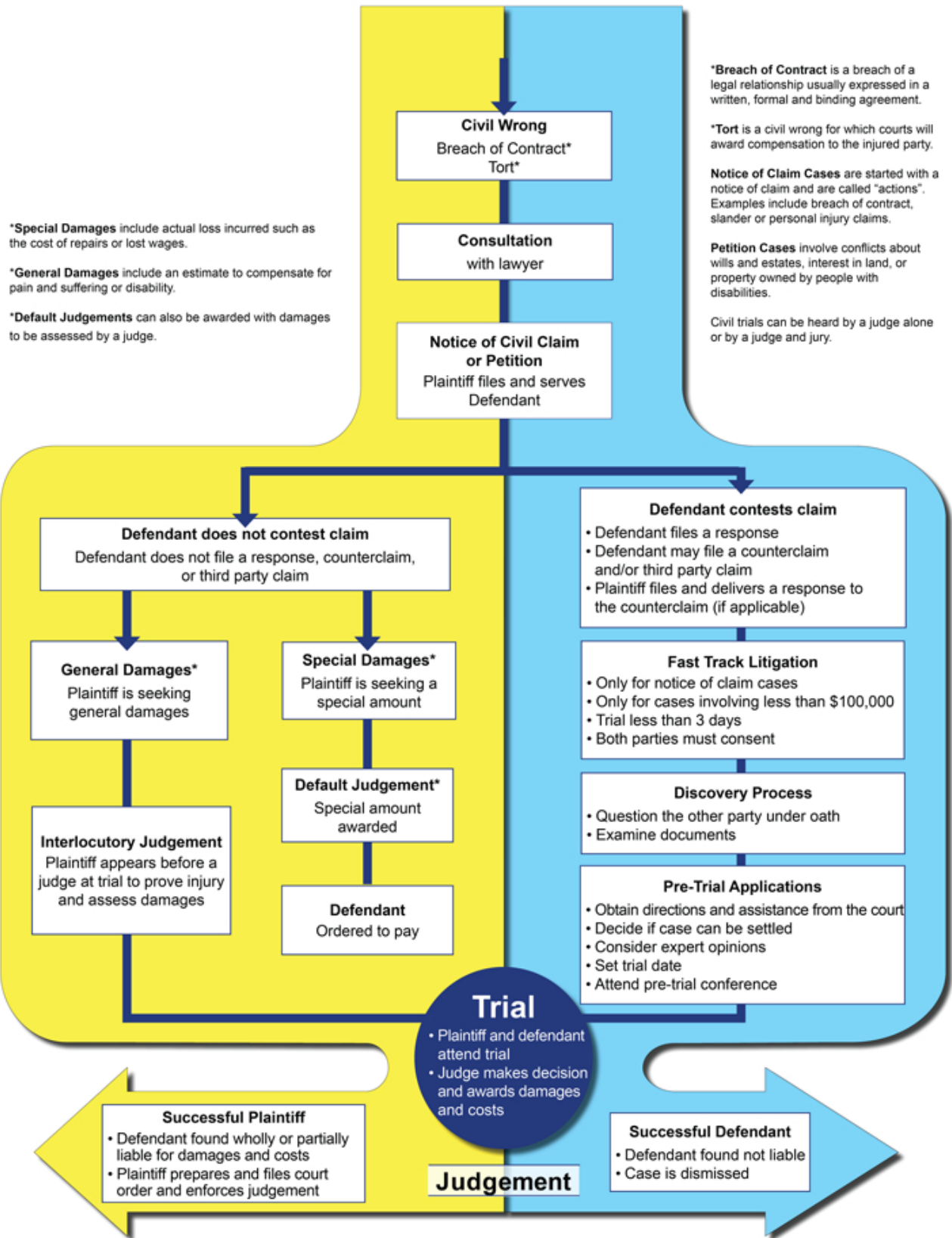


The Supreme Court Civil Process



***Special Damages** include actual loss incurred such as the cost of repairs or lost wages.

***General Damages** include an estimate to compensate for pain and suffering or disability.

***Default Judgements** can also be awarded with damages to be assessed by a judge.

***Breach of Contract** is a breach of a legal relationship usually expressed in a written, formal and binding agreement.

***Tort** is a civil wrong for which courts will award compensation to the injured party.

Notice of Claim Cases are started with a notice of claim and are called "actions". Examples include breach of contract, slander or personal injury claims.

Petition Cases involve conflicts about wills and estates, interest in land, or property owned by people with disabilities.

Civil trials can be heard by a judge alone or by a judge and jury.